

**Chapter 20-1, 20-2 Reading**

1. A \_\_\_\_\_ is anything that is not a plant, animal, or fungi.
2. What does the word "protist" mean? \_\_\_\_\_
3. Protist DNA indicates that different groups evolved independently from \_\_\_\_\_.
4. One way to classify protists is according to the way they obtain \_\_\_\_\_.
4. Protists that are heterotrophs are called \_\_\_\_\_ protists;  
 protists that are autotrophs are called \_\_\_\_\_ protists.
5. How do funguslike protists obtain their food? \_\_\_\_\_

**20- 2 Animal-like Protists: Protozoans**

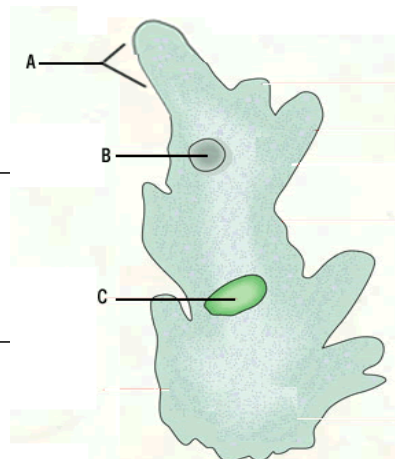
1. What does the word "protozoa" mean? \_\_\_\_\_
2. How are the four phyla of protozoa distinguished from one another? \_\_\_\_\_
3. What are flagella? \_\_\_\_\_
4. Animallike protists that swim using flagella are classified in the phylum \_\_\_\_\_
5. Where do many zooflagellates live? \_\_\_\_\_  
 Others live within \_\_\_\_\_
6. Many zooflagellates reproduce asexually by \_\_\_\_\_

**Sarcodines**

7. What is a pseudopod? \_\_\_\_\_
8. Sarcodines are \_\_\_\_\_ protists that use \_\_\_\_\_ for feeding and movement.
9. What are the best known sarcodines? \_\_\_\_\_
10. \_\_\_\_\_ movement occurs when the cytoplasm of the cell streams into a pseudopod, and the rest of the cell follows.
11. What is a food vacuole? \_\_\_\_\_
12. Name another member (besides the amoeba) of the Phylum Sarcodina: \_\_\_\_\_
13. The name "heliozoan" means \_\_\_\_\_

Label the amoeba

- A \_\_\_\_\_
- B \_\_\_\_\_
- C \_\_\_\_\_



## Ciliates

14. What is cilia? \_\_\_\_\_
15. Organisms that use cilia for movement are classified into the phylum \_\_\_\_\_
16. Organisms that do not exist as parasites or symbionts are called \_\_\_\_\_
17. Trichocysts are used for \_\_\_\_\_
18. What are the two types of nuclei found on a paramecium? \_\_\_\_\_
19. In ciliates, cilia sweeps food particles into the \_\_\_\_\_
20. Waste products are removed when the food vacuole fuses with the \_\_\_\_\_
21. What is the function of the contractile vacuole? \_\_\_\_\_
22. The expelling of excess water via the contractile vacuole is one of the ways a paramecium maintains \_\_\_\_\_
23. \_\_\_\_\_ allows a paramecium to exchange genetic material.
24. Conjugation helps large populations produce and maintain genetic \_\_\_\_\_

## Sporozoans

25. Members of the phylum \_\_\_\_\_ do not more on their own and are parasitic.

## Animal-like Protists and Disease

26. View the picture on page 503, answer True or False to the following statements.

- \_\_\_\_\_ Infection begins when a mosquito bites a human.
- \_\_\_\_\_ Plasmodium cells called merozoites infect the liver.
- \_\_\_\_\_ Merizoites cause red blood cells to burst.



27. Name two diseases caused by animal-like protists \_\_\_\_\_  
\_\_\_\_\_
28. What drug can be used to treat malaria? \_\_\_\_\_
29. What is the best means of controlling malaria? \_\_\_\_\_
30. Members of the genus *Trypanosoma* cause what disease? \_\_\_\_\_  
List three symptoms of this disease: \_\_\_\_\_
31. Where does the protist *Entamoeba* live within the body? \_\_\_\_\_
32. *Giardia* can be killed by boiling water or by adding \_\_\_\_\_ to the water.
33. Infection by *giardia* can cause severe \_\_\_\_\_

## Ecology of Animal-like Protists

34. In what animal does *Trichonympha* live? \_\_\_\_\_  
*Trichonympha* makes it possible for for these animals to \_\_\_\_\_